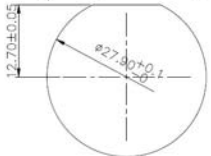
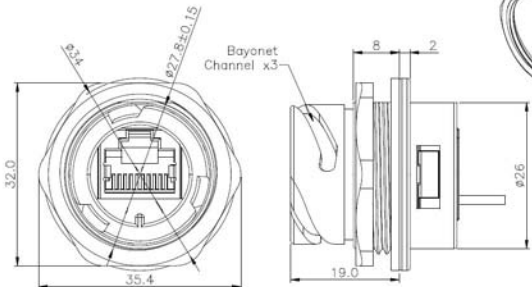
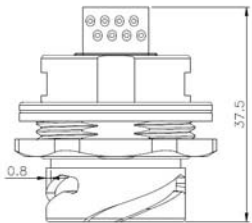
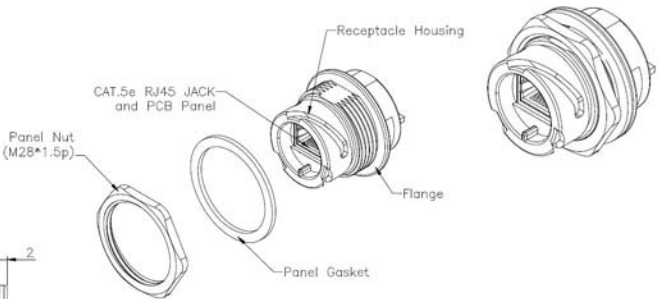


VPI P/N: RJ45-5EWTP-QR-PCBJCK-SHLDM



Panel Cut-Out



Electrical Specifications:

- Meets EIA/TIA-568-B.2 Cat.5e Specification
- Contact Resistance: 20 mOhm max
- Insulation Resistance: 500 MOhm min @100V DC
- Current Rating: 1.5A max
- Voltage Rating: 100VDC
- DWV: 1000V DC/60s min Contact to Contact, 1500V DC/60s Contact to Metal Shell
- Operating Temperature: 0°C TO + 70°C

Material and Finish

- Receptacle Housing: Zn Alloy 3,Nickel Plated
- Panel Nut: Copper Alloy,Nickel Plated
- Panel Gasket: Silicone
- RJ45 Jack Metal Shell: Copper Alloy,Nickel Plated
- RJ45 Jack Plastic Housing:Engineering Thermoplastic Flammability Rating UL94 V-0
- RJ45 Jack Contact: Phosphor Bronze,finish:Gold over Nickel
- Color: Black
- Connector can be front mounted to a maximum panel thickness of 3.2mm.

RoHS COMPLIANT

Unit: Millimeters



1275 Danner Drive Aurora, Ohio 44202
 Tel: 330-562-2622 Fax: 330-562-1999
 www.vpi.us