

CAT6/6a Couplers

www.vpi.us/c/cat6-couplers-243

CAT6 RJ45 Inline Coupler with Lock



RJ45-6-FFL-WHITE

- Straight wired coupler for connecting two CAT6 cables together.
- Female-to-female CAT6 RJ45 connectors.
- Compatible with Gigabit Ethernet.
- Secure RJ45 connections with the lock function.
- Requires KEY-RJ45-L to lock/unlock (sold separately)
- Supported wire gauge: 22 thru 26 AWG
- Dimensions WxDxH (in): 1.92x1.02x1.014
- Operating Temperature: -40 to 158°F (-40 to 70°C)
- Case material: ABS rated UL-94V0
- Regulatory approvals: RoHS

CAT6 Shielded Keystone Jack Coupler



RJ45-6-FF-SNP-SHLD

- Straight type coupler for connecting two CAT6 cables together.
- Female-to female CAT6 RJ45 connectors.
- Keystone plug-in
- Fully shielded
- Compatible with modular patch panels.
- Dimensions WxDxH (in): 0.6x1.4x0.5

CAT6 Junction Box



CAT6-JBPD

- Connecting block for splicing two CAT6 cables together.
- Solid conductor
- 24 thru 26 AWG
- Type 110 connector punch down.

CAT6 RJ45 Shielded Inline Coupler with Lock



RJ45-6-FFL-WHITE-SHLD

- Straight wired coupler for connecting two CAT6 shielded cables together.
- Fully shielded
- Female-to-female CAT6 RJ45 connectors.
- Compatible with Gigabit Ethernet.
- Secure RJ45 connections with the lock function.
- Requires KEY-RJ45-L to lock/unlock (sold separately)
- Supported wire gauge: 22 thru 26 AWG
- Dimensions WxDxH (in): 1.92x1.02x1.014
- Operating Temperature: -40 to 158°F (-40 to 70°C)
- Case material: ABS rated UL-94V0
- Regulatory approvals: RoHS

CAT6 RJ45 Inline Coupler



RJ45-6-FF-WHITE

- Straight type coupler for connecting two CAT6 cables together.
- Female-to female CAT6 RJ45 connectors.
- Straight wired.
- Dimensions WxDxH (in): 1.0x1.7x1.0
- UL certified.

CAT6 Shielded Junction Box



CAT6-JBPD-SHLD

- Connecting block for splicing two CAT6 cables together.
- Fully shielded
- Solid conductor
- 24 thru 26 AWG
- Type 110 connector punch down.
- Dimensions WxDxH (in): 1.0x2.5x1.0

CAT6/6a Couplers

www.vpi.us/c/cat6a-couplers-244

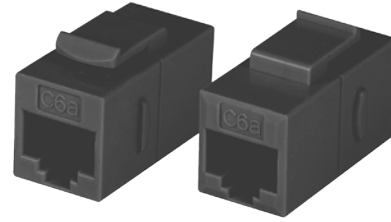
CAT6a Shielded Keystone Jack Coupler



RJ45-6A-FF-SNP-SHLD

- Straight type coupler for connecting two CAT6a cables together.
- Female-to female CAT6a RJ45 connectors.
- Keystone plug-in
- Fully shielded
- Compatible with modular patch panels.
- Dimensions WxDxH (in): 0.6x1.4x0.5

CAT6a Keystone Jack Coupler



RJ45-6A-FF-SNP-BLACK

- Straight type coupler for connecting two CAT6a cables together.
- Female-to female CAT6a RJ45 connectors.
- Keystone plug-in
- Compatible with modular patch panels.
- Dimensions WxDxH (in): 0.6x1.3x0.7