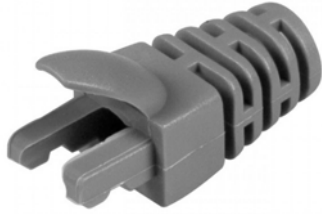


# RJ45 Strain Relief Boots

[www.vpi.us/c/rj45-boots-176](http://www.vpi.us/c/rj45-boots-176)

## Low-Profile RJ45 Strain Relief Boots



**BOOT-SKNYx-xx-COLOR**

- Slim, low profile boot is no wider than an RJ45 plug.
- Relieves conductor stress.
- Covers plug latch for added protection.
- Locking prongs create a secure fit.
- Available in: 5.5/6/6.5/7 mm (O.D.)
  - Use the 5.5mm boots with VPI's CAT5e shielded/unshielded bulk cable.
    - ◆ Colors: gray or blue.
  - Use the 6/6.5mm boots with VPI's CAT6 unshielded bulk cable.
    - ◆ 6 mm colors: black, red, green, or gray.
    - ◆ 6.5 mm color: black or green
  - Use the 7mm boots with VPI's CAT6 shielded, CAT6a shielded/unshielded, CAT7 stranded, and CAT7 outdoor stranded bulk cable.
    - ◆ Colors: black, white, yellow, gray, blue, or green.

## Hirose-Type CAT6 RJ45 Strain Relief Boots



**BOOT-CLP6-5-COLOR**

- Fits Hirose type RJ45 Plugs.
- Relieves conductor stress.
- Available in: 6.5 mm (O.D.)
- Use with the CAT6-PLG-STRANDED-SH-CLP or CAT6-PLG-SOLID-SH-CLP plugs.
- Available in black and white

## Long RJ45 Strain Relief Boots



**BOOT-LONG6-YELLOW**

- Relieves conductor stress.
- Covers plug latch for added protection.
- Long boot keeps cables from touching and makes it easier to identify cables.
- Available in: 6 mm (O.D.)
  - Use the 6mm boots with VPI's CAT5/5e/6 unshielded bulk cable.
- Available in yellow only.
- Length: 3.5 inches.