

# Premium CAT6/6a RJ45 Plugs and Jacks

[www.vpi.us/c/premium-rj45-174](http://www.vpi.us/c/premium-rj45-174)

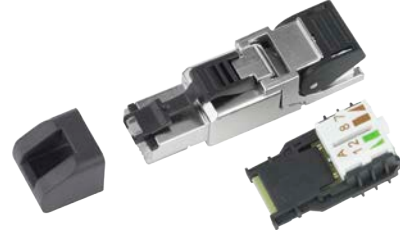
## CAT6 Shielded Field Assembly RJ45 Connector for 24-26 AWG Solid/Stranded Cable



**6-PLG-SH-FA**

- RJ45 plug for larger diameter CAT6 round cable.
- Supports Gigabit Ethernet (1000Base-T) transfer rates.
- Accepts large cable diameters of 0.217"-0.334".
- For Stranded or Solid Conductors.
- 22 thru 26 AWG.
- TIA/EIA 568A/568B Termination
- 360 degrees of zinc die-cast metal shielding protects signals from external noise.
- How to: assembly is quick and easy, simply press together with your fingers or with the Parallel Crimp Tool.
- Supports Power over Ethernet+.
- Presorted wire loading bar allows easy handling, just slide in the wires to the color-coded spaces.
- Perfect for use with **CAT6-BULK-STP-color-NPC** and **CAT6-BULK-STP-PLNM-GRAY-NPC** to create patch cords.
- Regulatory approvals: RoHS.

## CAT6a Shielded Field Assembly RJ45 Connector for 24-26 AWG Solid/Stranded Cable



**6A-PLG-SH-AFA**

- RJ45 plug for larger diameter CAT6a round cable.
- Supports 10 Gigabit Ethernet (10GBase-T) transfer rates.
- Accepts large cable diameters of 0.217"-0.354".
- For Stranded or Solid Conductors.
- 22 thru 27 AWG.
- 6A-PLG-SH-AFA: TIA/EIA 568A Termination
- 6A-PLG-SH-BFA: TIA/EIA 568B Termination
- 360 degrees of zinc die-cast metal shielding protects signals from external noise.
- How to: assembly is quick and easy, simply press together with your fingers or with the Parallel Crimp Tool.
- Supports Power over Ethernet+.
- Presorted wire loading bar allows easy handling, just slide in the wires to the color-coded spaces.
- Perfect for use with **CAT6A-BULK-BLUE-NPC** to create patch cords.
- Regulatory approvals: RoHS

## CAT6a Shielded Field Assembly RJ45 Keystone Jack



**JCK-6A-SHLD-AFA**

- Vertical orientation.
- Supports 10 Gigabit Ethernet (10GBase-T) transfer rates.
- IDC termination clamps firmly grasp stranded or solid conductors for a reliable connection.
- For Stranded or Solid Conductors.
- 22 thru 27 AWG.
- JCK-6A-SHLD-AFA: TIA/EIA 568A Termination
- JCK-6A-SHLD-BFA: TIA/EIA 568B Termination
- 360 degrees of zinc die-cast metal shielding protects signals from external noise.
- How to: assembly is quick and easy, simply press together with your fingers or with the Parallel Crimp Tool.
- Supports Power over Ethernet+.
- Molded ground connection for quick attachment of grounding wire.
- Cable clip grounds connector and provides strain relief
- Presorted wire loading bar allows easy handling, just slide in the wires to the color-coded spaces.
- Regulatory approvals: RoHS.