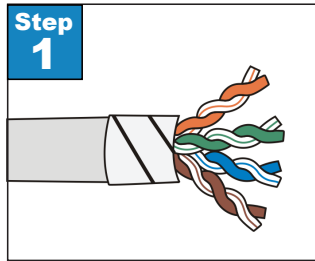
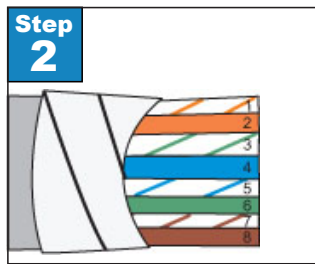




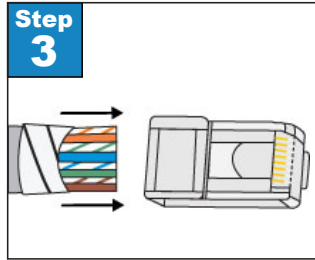
How to Assemble a Category 5e Shielded RJ45 Plug



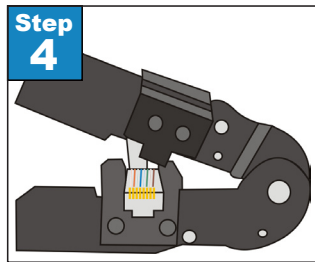
Step 1. Carefully strip the outer sheath insulation back 1". Roll back the foil shield insulation and wrap the drain wire around the foil. Do not remove any insulation from the conductors.



Step 2. Untwist the pairs to within 1/8" of the jacket. Arrange the wires according to TIA/EIA 568A & 568B standards. Flatten and align the wires. Make one straight cut across all the conductors, removing approximately 1/2".



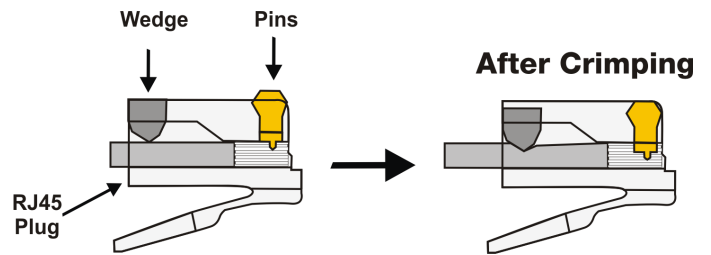
Step 3. Hold the connector in front of you with the locking tab down. Orient the wires so connector Pin 1 aligns with cable Pin 1, etc. Pin 1 is on the far left. Slide the wires into the CAT5e connector. The cable jacket with shield must extend into the connector about 1/4" for strain relief and shielding connection.



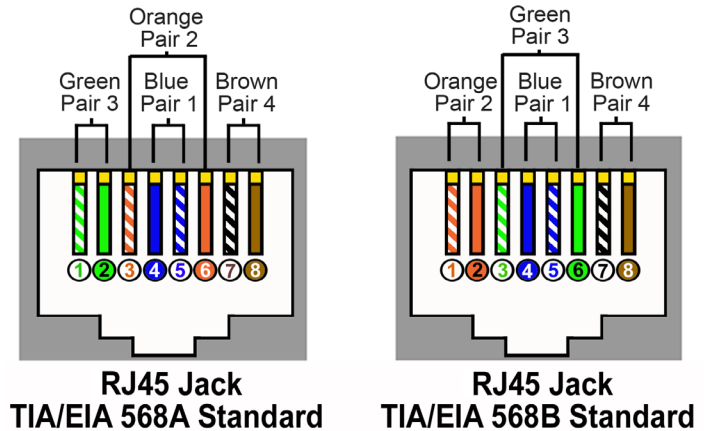
Step 4. Insert the plug into a crimp tool. Firmly squeeze the handles to set the contacts and secure the cable.

Materials Required

- CAT5e Cable
- CAT5e Plug
- CAT5e Stripper
- Cutters
- RJ45 Crimp Tool
- CAT5e Cable Tester



Wiring Diagram



Step 5. Test the cable using a cable tester to check for shorts, opens or miswires.