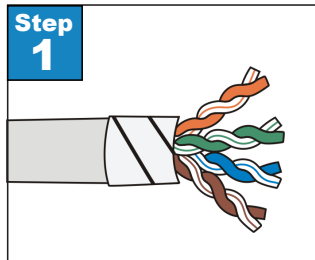
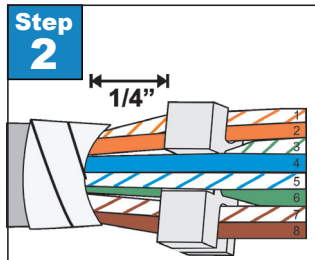




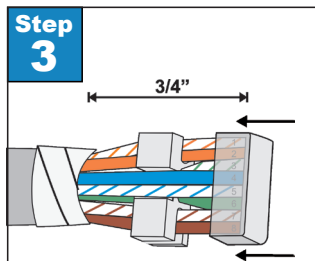
**How to Assemble a Category 6 Shielded Stranded or Solid RJ45 Plug with Cable Clip**



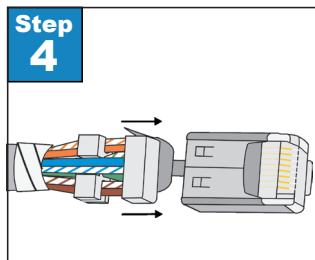
**Step 1.** Carefully strip the jacketing from the cable to expose 1" of the insulated wire conductors. Slide on Strain Relief boot. Roll back the foil shield and wrap the drain wire around the foil. Do not remove any insulation from the conductors. Trim the + shaped divider 1/4" from the jacket.



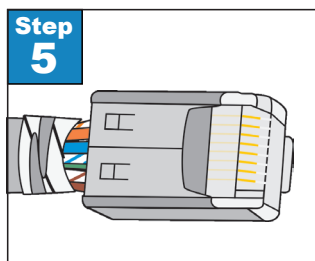
**Step 2.** Untwist the wires, except for 1/4" from the jacket. Arrange the wires according to TIA/EIA 568A & 568B standards. Insert wires into spacer bar, and position the spacer bar 1/4" away from the jacket.



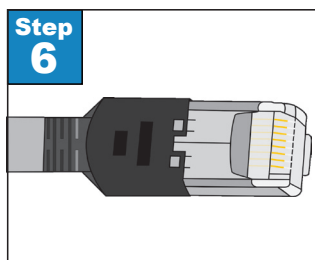
**Step 3.** Flatten and align the wires. Trim the wires to 3/4" from the jacket. Insert wires into loading bar. The loading bar should fit like a cap. The spacer bar should be spaced enough from the loading bar to allow the wires to be flattened and aligned before entering the loading bar.



**Step 4.** Insert prepared cable into plug. Try to avoid the cable clip while inserting cable into plug.



**Step 5.** Insert the plug into a ratcheting crimp tool. Firmly squeeze the handles until they release to set the contacts, secure the cable, and set the cable clip around the cable.

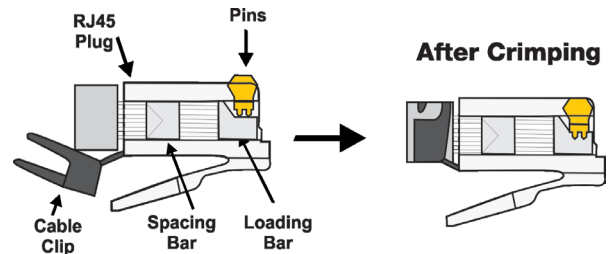


**Step 6.** Slide the Strain Relief Boot onto the plug, until it grabs the small teeth on the plug body.

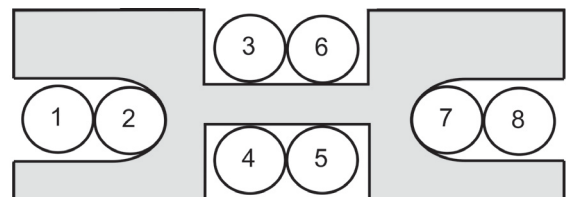
**Step 7.** Test the cable using a cable tester to check for shorts, opens or miswires.

**Materials Required**

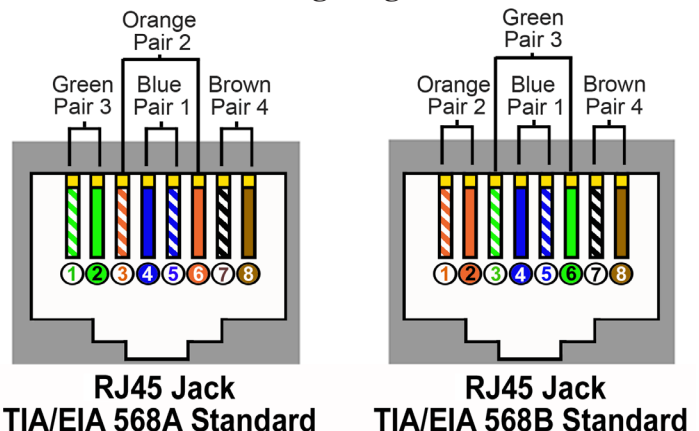
- CAT6 Cable
- CAT6 Plug - 6-PLG-STRANDED-SH-CLP or 6-PLG-SOLID-SH-CLP
- Strain Relief Boot -BOOT-CLP6-COLOR
- CAT6 Stripper
- Cutters
- RJ45 Crimp Tool - CRIMP-RJ45-SH-H
- CAT6 Cable Tester



**Spacing Bar Wiring Diagram**



**Wiring Diagram**



**RJ45 Jack  
TIA/EIA 568A Standard**

**RJ45 Jack  
TIA/EIA 568B Standard**