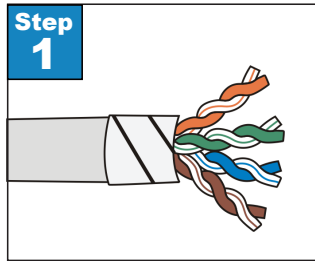
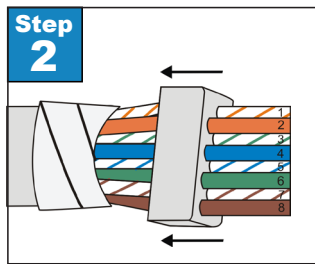




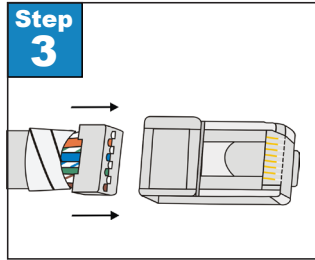
How to Assemble a Category 6 Shielded RJ45 Plug



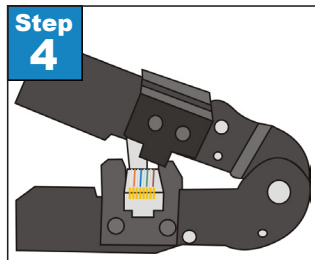
Step 1. Carefully strip the outer sheath insulation back 1". Roll back the foil shield insulation and wrap the drain wire around the foil. Do not remove any insulation from the conductors.



Step 2. Untwist the pairs to within 1/8" of the jacket. Arrange the wires according to TIA/EIA 568A & 568B standards. Flatten and align the wires. Make one straight cut across all the conductors, removing approximately 1/2". Insert wires into loading bar. Trim excess wires.



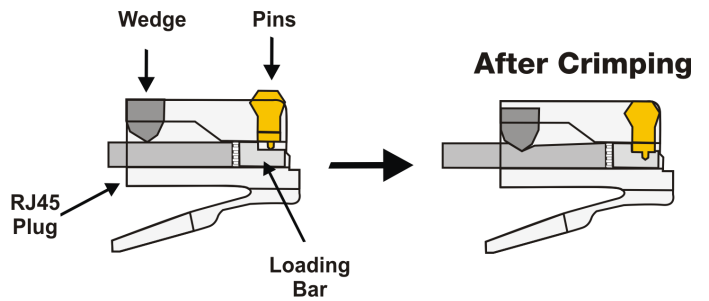
Step 3. Insert prepared cable into plug. The cable jacket with shield must extend into the connector about 1/4" for strain relief and shield connection.



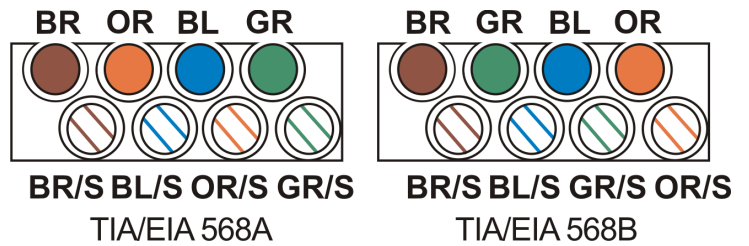
Step 4. Insert the plug into a crimp tool. Firmly squeeze the handles to set the contacts and secure the cable.

Materials Required

- CAT6 Cable
- CAT6 Plug
- CAT6 Stripper
- Cutters
- RJ45 Crimp Tool
- CAT6 Cable Tester



Wiring Diagram



Step 5. Test the cable using a cable tester to check for shorts, opens or miswires.