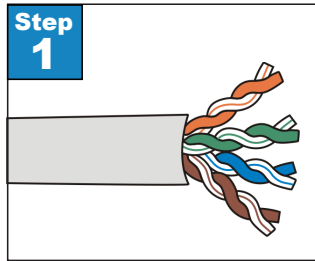




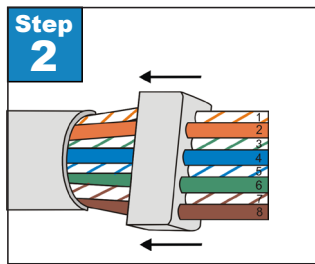
How to Assemble a Category 6 Solid or Stranded RJ45 Plug



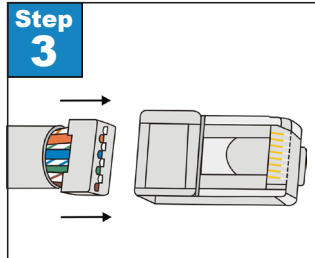
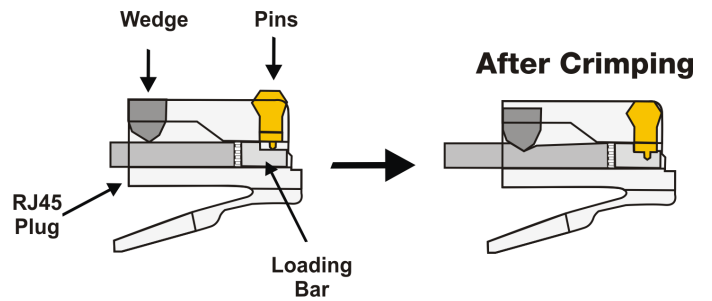
Step 1. Carefully strip the jacketing from the cable to expose 1” of the insulated wire conductors. Do not remove any insulation from the conductors.

Materials Required

- CAT6 Cable
- CAT6 Plug
- CAT6 Stripper
- Cutters
- RJ45 Crimp Tool
- CAT6 Cable Tester

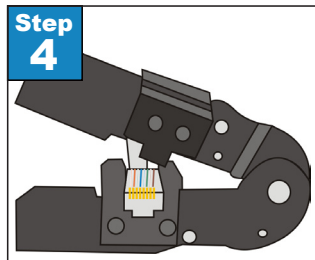
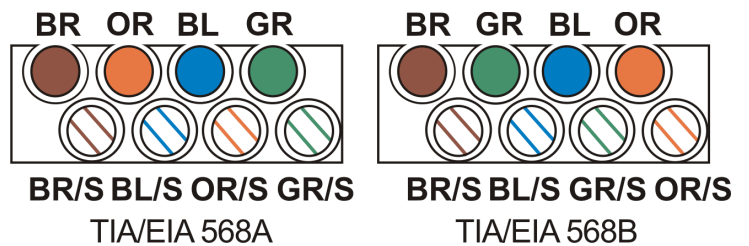


Step 2. Untwist the pairs to within 1/8” of the jacket. Arrange the wires according to TIA/EIA 568A & 568B standards. Flatten and align the wires. Make one straight cut across all the conductors, removing approximately 1/2”. Insert wires into loading bar. Trim excess wires.



Step 3. Insert prepared cable into plug.

Wiring Diagram



Step 4. Insert the plug into a crimp tool. Firmly squeeze the handles to set the contacts and secure the cable.

Step 5. Test the cable using a cable tester to check for shorts, opens or miswires.