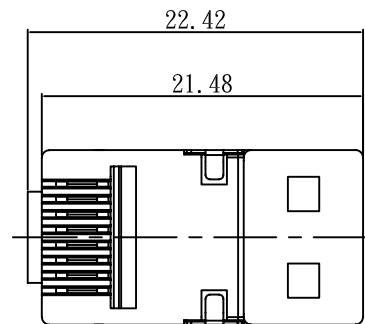
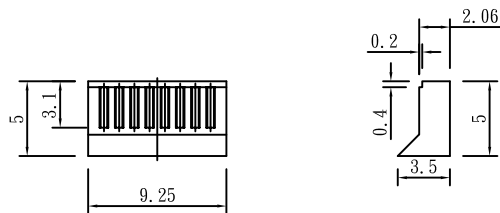
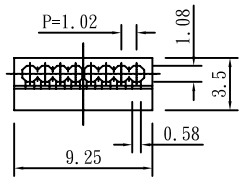
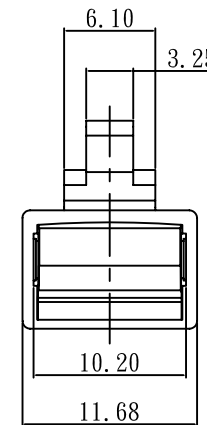
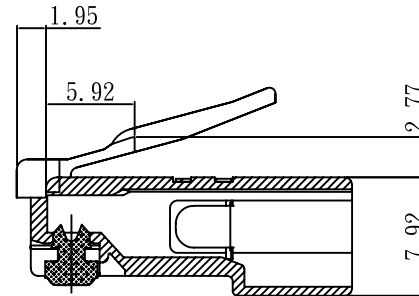
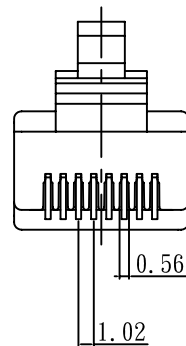
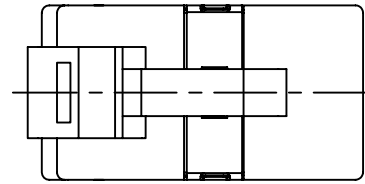
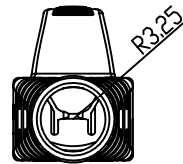
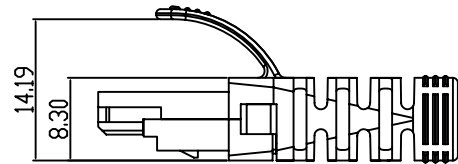
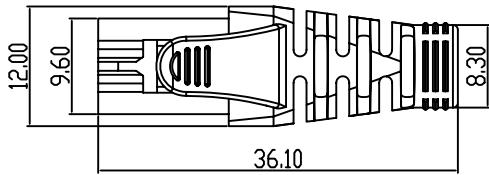


SPECIFICATION
MECHANICAL:

1. Housing Material: Polycarbonate, UL 94V-2. NO Poison
2. Material Contact: 6U" Below Brass.
15U" Above Phosphor Bronze.
3. Material Shell : Brass.
4. Contact area plated gold over 3U" /6U" /15U" /
30U" and 50U", the other area plated gold over FU".
5. Contact area plated Nickel over 60U",
the other area plated Nickel over 30U".
6. Housing Color: Transparence.
7. Operation Temperature: -40°c to 80°c.



Insert

Housing

UNITS = MILLIMETERS

NOTE TOL: ±0.1