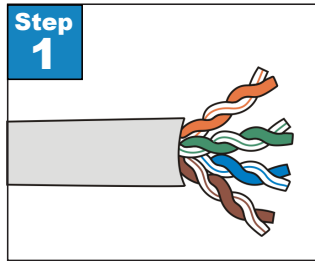
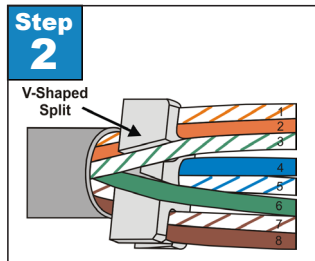




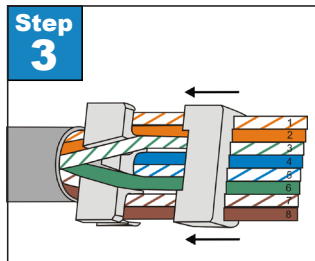
How to Assemble a Category 6a Stranded RJ45 Plug



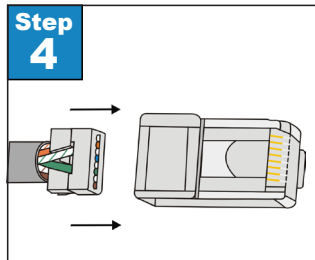
Step 1. Carefully strip the jacketing from the cable to expose 1” of the insulated wire conductors. Do not remove any insulation from the conductors.



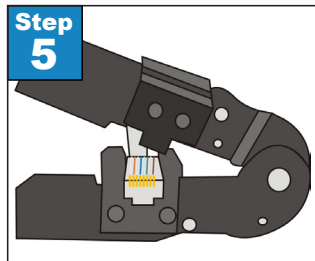
Step 2. Untwist the wires. Arrange the wires according to TIA/EIA 568A & 568B standards. Insert wires into spacer bar, with the “V” shaped split facing upwards and away from the jacket. Position the space bar as close to the jacket as possible.



Step 3. Flatten and align the wires. Insert wires into loading bar, and slide the loading bar on so that it touches the space bar. Trim excess wires flush with loading bar.



Step 4. Insert prepared cable into plug.

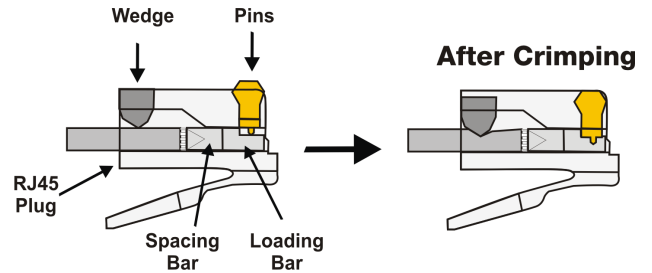


Step 5. Insert the plug into a crimp tool. Firmly squeeze the handles to set the contacts and secure the cable.

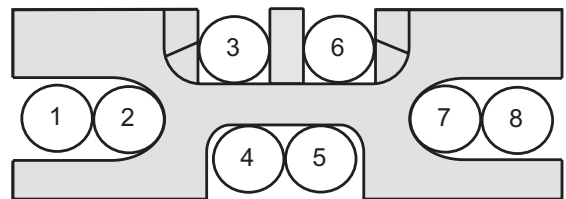
Step 6. Test the cable using a cable tester to check for shorts, opens or miswires.

Materials Required

- CAT6a Cable
- CAT6a Plug
- CAT6a Stripper
- Cutters
- RJ45 Crimp Tool
- CAT6a Cable Tester



Spacing Bar Wiring Diagram



Wiring Diagram

