



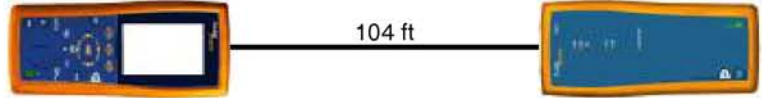
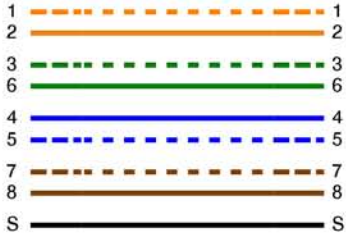
Test Summary: PASS

Date / Time: 11/17/2012 11:07:27am
 Headroom: 18.6 dB (NEXT 12-36)
 Test Limit: 10GBASE-T
 Cable Type: Cat 7 SSTP

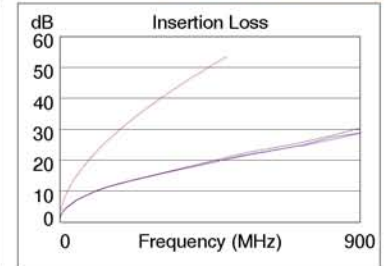
Operator: TOM
 Software Version: 2.4100
 Limits Version: 1.6000
 NVP: 76.0%

Model: DTX-1800
 Main S/N: 9626073
 Remote S/N: 9626074
 Main Adapter: DTX-CHA002
 Remote Adapter: DTX-CHA001

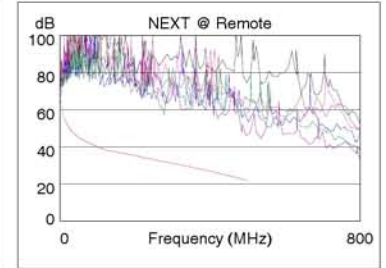
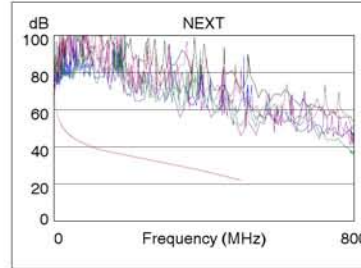
Wire Map (T568B)
PASS



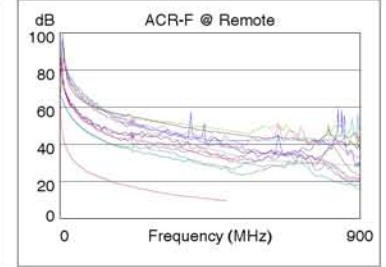
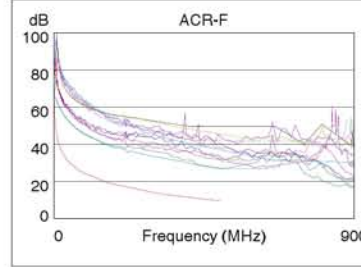
Length (ft)	[Pair 12]	104
Prop. Delay (ns), Limit 555		139
Delay Skew (ns), Limit 50		0
Resistance (ohms)	[Pair 12]	10.9
Insertion Loss Margin (dB)	[Pair 45]	32.6
Frequency (MHz)	[Pair 45]	500.0
Limit (dB)	[Pair 45]	53.4



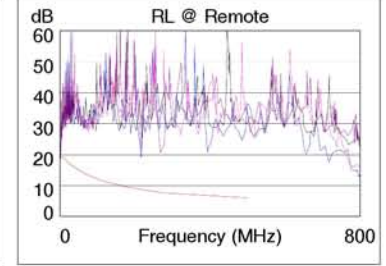
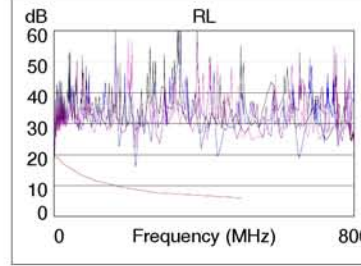
	Worst Case Margin		Worst Case Value	
	MAIN	SR	MAIN	SR
PASS				
Worst Pair	12-36	36-78	36-45	36-45
NEXT (dB)	18.6	20.4	24.1	20.7
Freq. (MHz)	14.5	15.0	498.0	499.0
Limit (dB)	53.9	53.7	22.1	22.0
Worst Pair	36	36	36	36
PS NEXT (dB)	18.4	20.5	24.4	21.6
Freq. (MHz)	14.4	17.6	498.0	499.0
Limit (dB)	51.4	49.9	20.5	20.5



	Worst Case Margin		Worst Case Value	
	MAIN	SR	MAIN	SR
PASS				
Worst Pair	36-45	45-36	36-45	36-45
ACR-F (dB)	2.9	2.9	17.2	17.0
Freq. (MHz)	1.0	1.0	476.0	485.0
Limit (dB)	63.3	63.3	9.7	9.5
Worst Pair	36	36	36	36
PS ACR-F (dB)	14.4	5.4	18.8	18.9
Freq. (MHz)	3.1	1.0	500.0	476.0
Limit (dB)	50.4	60.3	6.3	6.7



	Worst Case Margin		Worst Case Value	
	MAIN	SR	MAIN	SR
PASS				
Worst Pair	12	36	12	12
RL (dB)	7.3	8.9	7.3	10.5
Freq. (MHz)	217.5	8.4	217.5	216.5
Limit (dB)	8.6	19.0	8.6	8.6



Compliant Network Standards:
 10BASE-T 100BASE-TX 100BASE-T4
 1000BASE-T 10GBASE-T ATM-25
 ATM-51 ATM-155 100VG-AnyLan
 TR-4 TR-16 Active TR-16 Passive