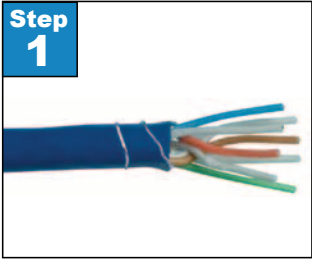
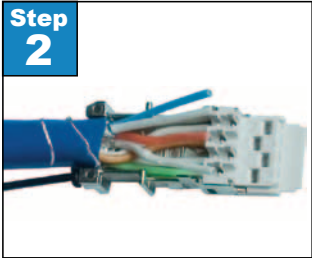


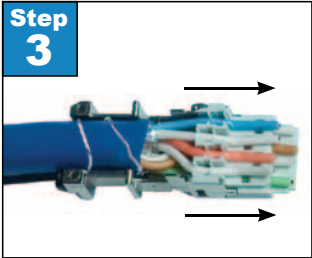
How to Assemble a Category 6 Shielded Field Assembly RJ45 Plug



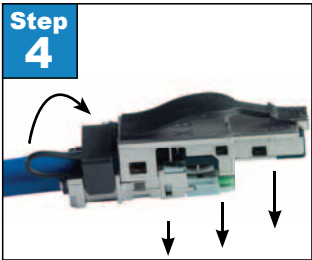
Step 1. After the outer sheath insulation is stripped, wrap the drain wire around the jacket. Untwist the pairs to within 1/8" of the jacket and arrange the wires according to TIA/EIA 568A or 568B standards.



Step 2. Flatten and align the wires appropriately to be seated within the plug.



Step 3. Insert prepared cable into loading bar by pushing the bottom wires through the appropriate holes (ref: Wiring Diagram) and pressing down on the top row of cables to be seated into their appropriate slots. Trim the excess wires.

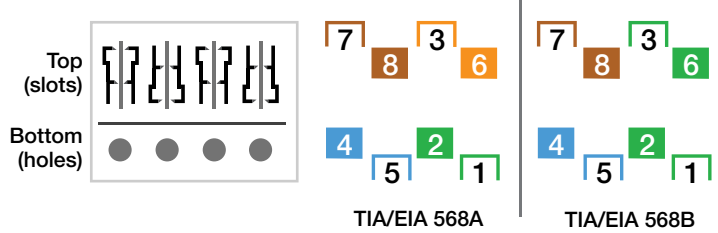


Step 4. Finally align the plug with the appropriate slots of the IDC and press down firmly (with either using your fingers or a Parallel Crimp Tool) until you hear it snap together. Apply the strain relief cover over top of the cable and into the designated slots located on the sides of the IDC.

Materials Required

- CAT6 Cable
- CAT6 Plug
 - 6-PLG-SH-FA
- CAT6 Stripper
- Parallel Crimp Tool
 - CRIMP-PLG-FA
 - CRIMP-PLG-FA-LC
- CAT6 Cable Tester

Wiring Diagram



Step 5. Test the cable using a cable tester to check for shorts, opens and miswires.