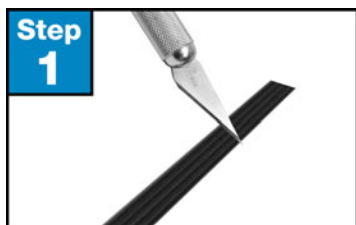


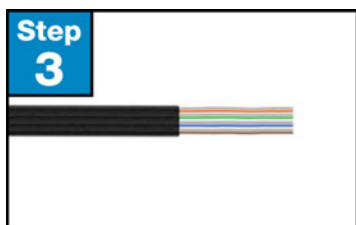
## How to Assemble a Category 5e/6 Ultra Super Flat Plug



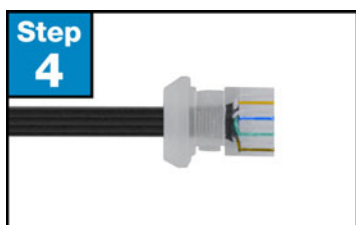
**Step 1.** Lay the end of your cable on a flat surface. Using an x-acto knife, very carefully score the jacket across the cable 1" from the end.



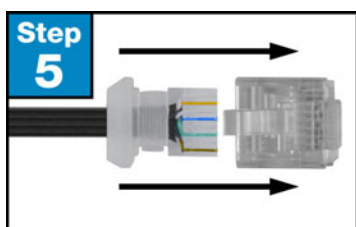
**Step 2.** Flex the cable where you scored it and use needle nose pliers to peel off the jacket. Use wire cutters to trim any excess that does not peel off.



**Step 3.** Expose 1" of the insulated wire conductors. Do not remove any insulation from the conductors.



**Step 4.** Untwist the pairs to within 1/8" of the jacket. Arrange the wires according to TIA/EIA 568A or 568B standards. Flatten and align the wires. Make one straight cut across all the conductors, removing approximately 1/2". Insert wires into loading bar. Trim excess wires.



**Step 5.** Insert prepared cable into plug.



**Step 6.** Insert the plug into a crimp tool aligned to the slotted jaw. Firmly squeeze the handles to set the contacts.

**Step 7.** Test the cable using a cable tester to check for shorts, opens or miswires.

### Materials Required

- CAT5e/6 Ultra Super Flat Cable
- CAT5e/6 Ultra Super Flat Plug
- Utility knife (e.g. X-Acto knife)
- RJ45 Super Flat Modular Crimp Tool (CRIMP-RJ45-SF)
- CAT5e Cable Tester

### Wiring Diagram

