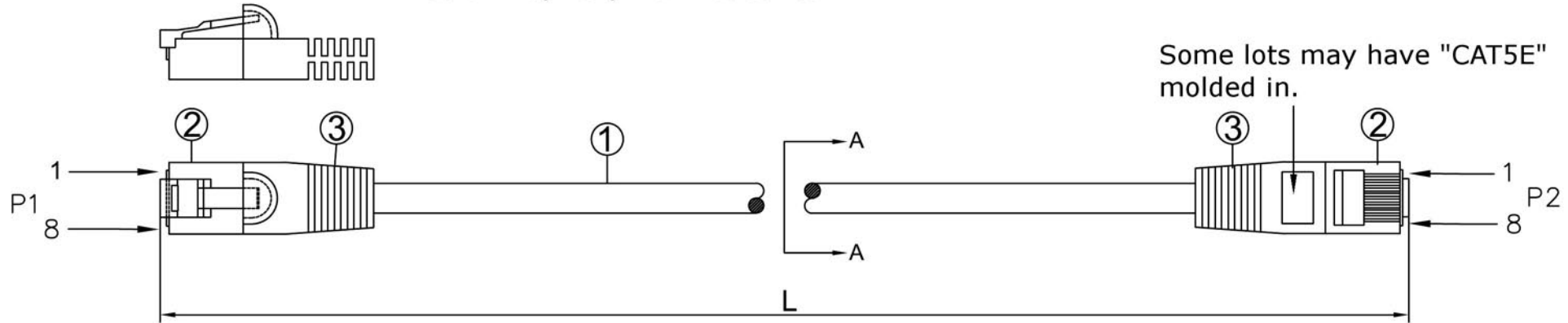


NOTE: ALL MATERIAL COMPLIANT ROHS STANDARD

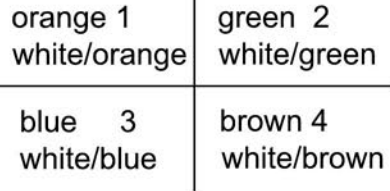
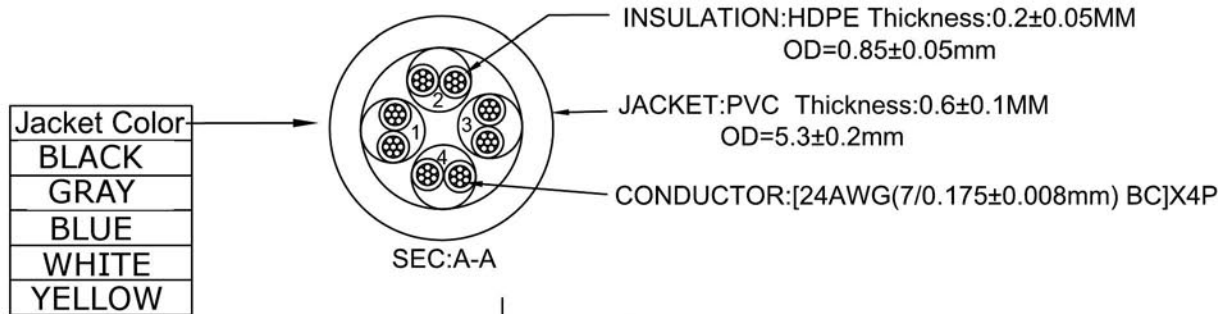
Cable markings, mold appearance and cable color may vary from lot to lot.

VPI P/N: CAT5E-xx-COLOR



Some lots may have "CAT5E" molded in.

INK MARKING (SOME LOTS): UTP CAT.5E 350MHZ PATCH ISO/IEC 11801 & EN 50288 & ANSI/TIA-568-C.2 3P CONFORMS TO GIGABIT ETHERNET ▲ 24AWGX4P TYPE CMX(UL) C(UL) CMH



Tolerances

L(ft)	T(inch)	T(%)	L(ft)	T(inch)	T(%)
2	± 1.2	5%	14	± 3.15	1.75%
3	± 1.2	3.33%	25	± 4	1.33%
5	± 1.2	2%	50	± 6	1.0%
7	± 2	2.38%	100	± 6	0.5%
10	± 2	1.67%			

PINOUT		
P1	WIRE	P2
1	WHITE/ORANGE	1
2	ORANGE	2
3	WHITE/GREEN	3
6	GREEN	6
5	WHITE/BLUE	5
4	BLUE	4
7	WHITE/BROWN	7
8	BROWN	8

QTY	SPECIFICATION	ITEM	NO.
2	PVC YU-19	MOLD	3
2	8P8C 50U RJ45	PLUG	2
1	CAT.5E UTP PVC 24AWG*4P BC	CABLE	1